

Crunch Fitness - Addison - Addison

addison

☐ I'm not a robot
 

Published on: 18/04/25	Hits: 2662
Comments: 0	See comments
Votes: 242	Score: 3.9

https://www.electrofitness.com/gym/addison/crunch-fitness-addison-addison_214342.php



addison

Crunch Fitness - Addison - Addison

Crisp Overview of Crunch Fitness - Addison in Addison, Texas

Welcome to Crunch Fitness in Addison, Texas, a gym that prides itself on offering a variety of fitness options while ensuring ****accessibility**** for all members. With a ****wheelchair-accessible car park**** and a ****wheelchair-accessible entrance****, Crunch Fitness aims to create an inclusive environment.

Membership Experience

At Crunch Fitness, a ****membership is required**** to access the facilities. Many

patrons express their satisfaction with the low monthly fees, often noting that it provides much value for the price. However, opinions vary significantly regarding service quality and equipment maintenance.

Planning Your Visit

For those planning to visit, it's essential to consider peak hours, typically between 5 PM to 8 PM, when the gym can become quite crowded. Members have reported that during these times, ****weighted equipment**** can feel uncomfortably close together. To enhance your experience, consider scheduling workouts during less busy periods.

Maintenance and Equipment Quality

While some members initially enjoyed the gym, many comments highlight a decline in equipment maintenance. Issues like broken treadmills and machines lacking proper repair have been frequently mentioned. Several members have questioned management about unresolved maintenance issues, indicating a need for better communication regarding repairs and customer service strategies.

Customer Service Concerns

The feedback on customer service at Crunch Fitness - Addison has been mixed. While some staff members are praised for their friendliness and attentiveness, others have been described as unhelpful, especially regarding membership cancellations. Members have faced challenges in canceling their memberships, often feeling ignored or misinformed about policies—a factor worth considering before signing up.

Conclusion

In summary, Crunch Fitness - Addison offers a competitive environment for those seeking affordability in a gym setting. With ****wheelchair access**** and a mix of enthusiastic and occasionally indifferent staff, this gym can cater to a diverse clientele. However, prospective members should weigh the ****equipment maintenance issues**** and ****customer service challenges**** against the low membership costs. It remains a decent choice for those who can navigate these uncertainties while enjoying their fitness journey.

You can reach us at

3854 Belt Line Rd, 75001 Addison, Texas - United States (US)

The phone number of the respective **Gym** is +1214-377-7680

And if you want to send a WhatsApp, you can do so at +1214-377-7680

The website is Crunch Fitness - Addison

If you need to update any data that you believe is not correct regarding this page, we ask send a message so that we will adjust it at the earliest convenience. With anticipation thank you very much.

Images



Crunch fitness addison addison



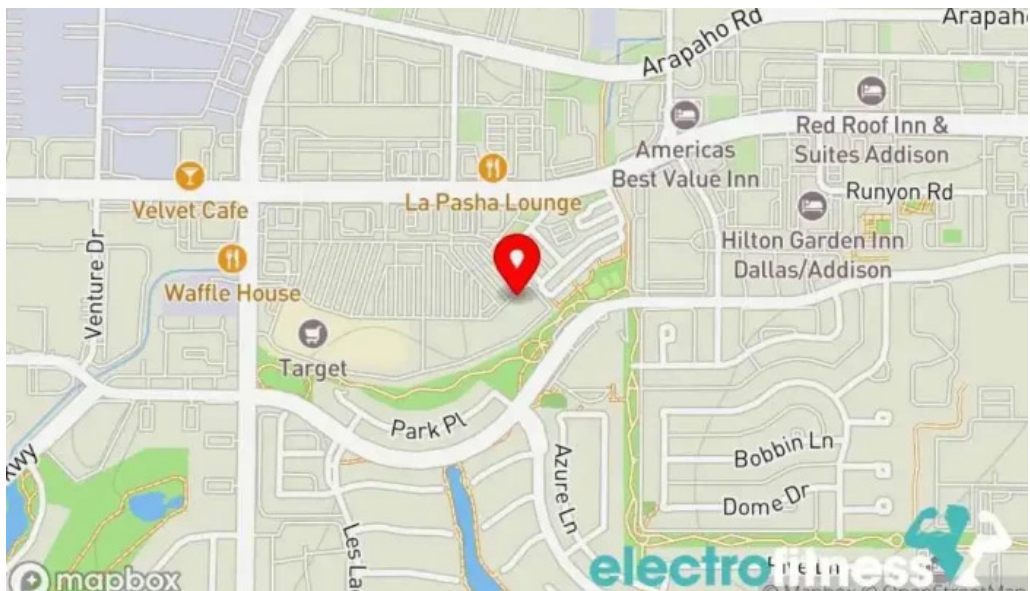
Crunch fitness addison videos



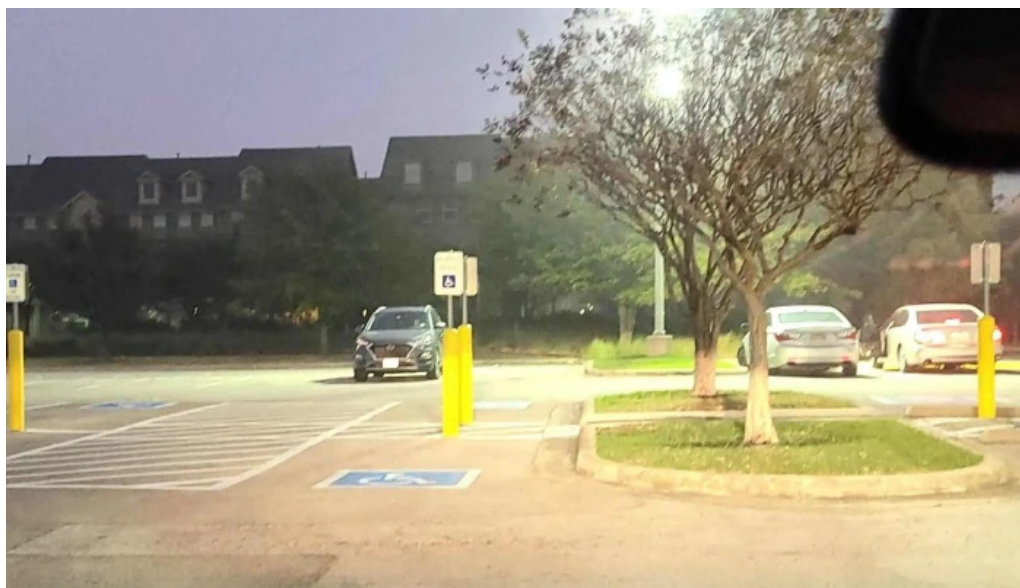
Crunch fitness addison street view 360deg



Crunch fitness addison prices



Crunch fitness addison map



Crunch fitness addison instagram



Crunch fitness addison gym



Crunch fitness addison exercise machine



Crunch fitness addison comments



Crunch fitness addison by owner



Crunch fitness addison area



Crunch fitness addison all



Crunch fitness addison addison

Tags

Membership required, Wheelchair-accessible entrance, Accessibility, Wheelchair-accessible car park, Planning

Related content

4.5 *	<i>Crunch Fitness - Brockton - Brockton</i>
4.5 *	<i>Crunch Fitness - Pharr - Pharr</i>
4.2 *	<i>Crunch Fitness - Walnut Creek - Walnut Creek</i>
3.5 *	<i>Crunch Fitness - Boise Black Eagle - Boise</i>
5.0 *	<i>Crunch Fitness - Coming Soon - Waldorf</i>
3.9 *	<i>Crunch Fitness - Boise State Street - Boise</i>
4.0 *	<i>Crunch Fitness - Abilene - Abilene</i>
3.8 *	<i>Crunch Fitness - Meridian - Meridian</i>
4.6 *	<i>Crunch Fitness - Acworth - Acworth</i>
5.0 *	<i>Iron Body Fitness - Meridian</i>

Categories

academic department

amusement park ride
arena
association / organization
athletic club
bar
basketball club
body shaping class
boot camp
boxing gym
boxing ring
children's party service
chiropractor
church
club
coffee shop
community center
convenience store
country club
coworking space
dance school
day spa
dollar store
elementary school
exercise equipment store
firearms academy
fitness
fitness center
golf club
golf course
golf instructor
grocery store
gym
gymnastics center
hair salon
health consultant
health food restaurant
health spa
hiking area
hospital
hotel
indoor cycling
jujitsu school

karate club
karate school
kennel
kickboxing school
kinesiologist
kinesiotherapist
martial arts club
martial arts school
massage therapist
meditation center
non-profit organization
nutritionist
park
personal trainer
pharmacy
physical fitness program
physical therapist
physical therapy clinic
pickleball court
pilates studio
private golf course
public educational institution
recreation center
rehabilitation center
rock climbing gym
school district office
self defense school
shooting range
shopping mall
spa
spa and health club
sporting goods store
sports club
sports complex
sports medicine clinic
sports school
supermarket
swimming instructor
swimming school
tennis club
thrift store
training centre

vitamin & supplements store
weightlifting area
wellness center
wellness program
women's personal trainer
yoga instructor
yoga studio
youth organization